

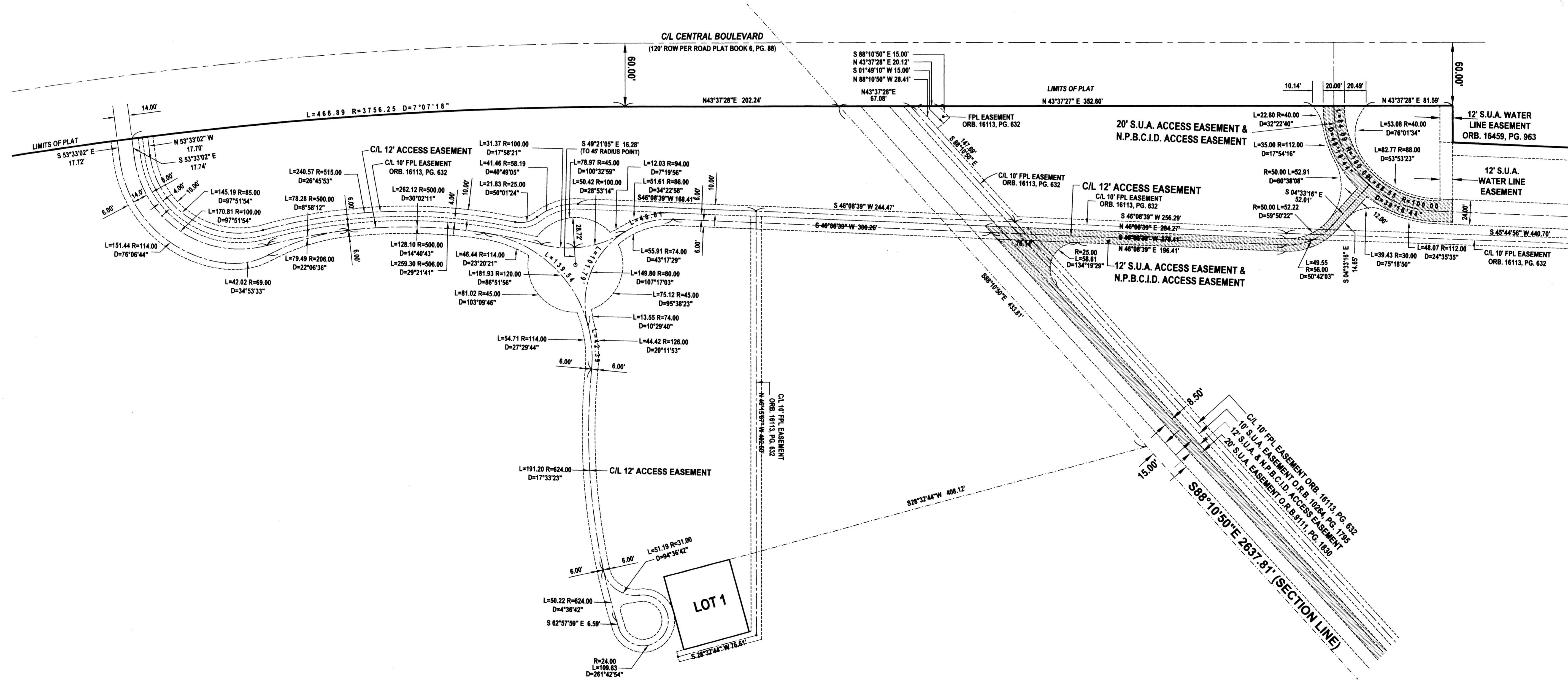
# OLD PALM EAST

BEING A REPLAT OF A PORTION OF PARCEL 2, OLD PALM PLAT 1, AS RECORDED IN PLAT BOOK 96, PAGES 31 THROUGH 34, PUBLIC RECORDS OF PALM BEACH COUNTY, FLORIDA LYING IN SECTIONS 35 AND 36, TOWNSHIP 41 SOUTH, RANGE 42 EAST AND SECTIONS 1 AND 2, TOWNSHIP 42 SOUTH, RANGE 42 EAST CITY OF PALM BEACH GARDENS, PALM BEACH COUNTY, FLORIDA  
SHEET 5 OF 5 MARCH 2004

118

STATE OF FLORIDA  
COUNTY OF PALM BEACH  
This plat was filed for record at \_\_\_\_\_ M. this \_\_\_\_\_ day of \_\_\_\_\_, 2004 and duly recorded in Plat Book No. \_\_\_\_\_ on Pages \_\_\_\_\_ thru \_\_\_\_\_.  
DOROTHY H. WILKEN  
Clerk Circuit Court  
By \_\_\_\_\_ D.C.

## DETAIL - 2 (ACCESS AND FPL EASEMENTS) SCALE: 1" = 50'



**LIDBERG LAND SURVEYING, INC.**

675 West Indiantown Road, Suite 200,  
Jupiter, Florida 33458 TEL. 561-746-8454

CAD K:\AUTOCAD2000\354142\OLDPALMEAST\03-081\DWG\30-081-306.DWG				
REF				
FLD		FB.	PC.	JOB 03-081 (306)
OFF	S.F.B.			DATE 06/01/03
CKD	D.C.L.	SHEET 5	OF 5	DWG D03-081P